

## What's New in Course Genie 2.1

## What's New in Course Genie 2.1

<b>1. Internationalisation/Localization .....</b>	<b>3</b>
<b>2. Installation/Upgrading .....</b>	<b>3</b>
<i>Previous versions .....</i>	<i>3</i>
<b>3. Upgrading existing schemes from previous versions .....</b>	<b>3</b>
<i>Warning! .....</i>	<i>3</i>
<b>4. Reselecting schemes from Settings .....</b>	<b>3</b>
<b>5. WebCT QTI Assessment Export .....</b>	<b>4</b>
<b>6. moodle/SCORM .....</b>	<b>4</b>
<i>moodle SCORM v1.2 package .....</i>	<i>4</i>
<i>moodle SCORM 2004 package .....</i>	<i>4</i>
<b>7. Digital Certificate.....</b>	<b>5</b>
<i>New Digital Certificate .....</i>	<i>5</i>
<b>8. Adobe Acrobat Professional and Microsoft Outlook .....</b>	<b>6</b>
<i>Adobe Acrobat Professional .....</i>	<i>6</i>
<i>Microsoft Outlook.....</i>	<i>6</i>
<b>9. AutoCorrect/AutoFormat.....</b>	<b>6</b>
<b>10. Windows 98/ME .....</b>	<b>6</b>

## 1. Internationalisation/Localization

A major focus for this release was internationalisation. It is now possible to create a fully localised version of Course Genie for any language where the text direction is Left-to-Right. Support for languages where the text direction is Right-to-Left is limited to the generated content; we will be adding support for Right-to-Left languages in the user interface in a future release.

When Course Genie loads it will detect the user interface language in use in Word, if a matching Course Genie language pack is found Course Genie will use the same language.

For more details please see the 'Customisation and Localization' manual.

## 2. Installation/Upgrading

### Previous versions

Please uninstall any previous 'Single Edition' or 'Trial' versions of Course Genie prior to v2.0 before installing this version. You can uninstall Course Genie using the 'Add/Remove Programs' utility in the 'Control Panel'.

The installer will automatically uninstall previous 'Campus Edition' and any v2.0 versions of Course Genie during installation.

## 3. Upgrading existing schemes from previous versions

### Warning!

As with previous updates, the Design Schemes and CSS stylesheets have been extended and updated to support this release.

If you have customised a scheme from a previous version of Course Genie it will be necessary to update it for it to work with this release of Course Genie.

Before you install this version of Course Genie make sure that you have created backups of any customizations you have made as these will be required for the upgrading process.

Your existing customisation of the CSS and/or images in the buttons directory can be used without modification, however, it is required that you make a couple of additions to the scheme for Course Genie v2.1 to recognize it.

Details regarding how to update a scheme can be found in the 'Upgrading Existing Schemes' section of the 'Customisation and Internationalization' manual which is installed with Course Genie. The manual can be found on the Start menu under Programs/Course Genie/Documentation.

Please email [cgsupport@horizonwimba.com](mailto:cgsupport@horizonwimba.com) if you have any questions or require any assistance.

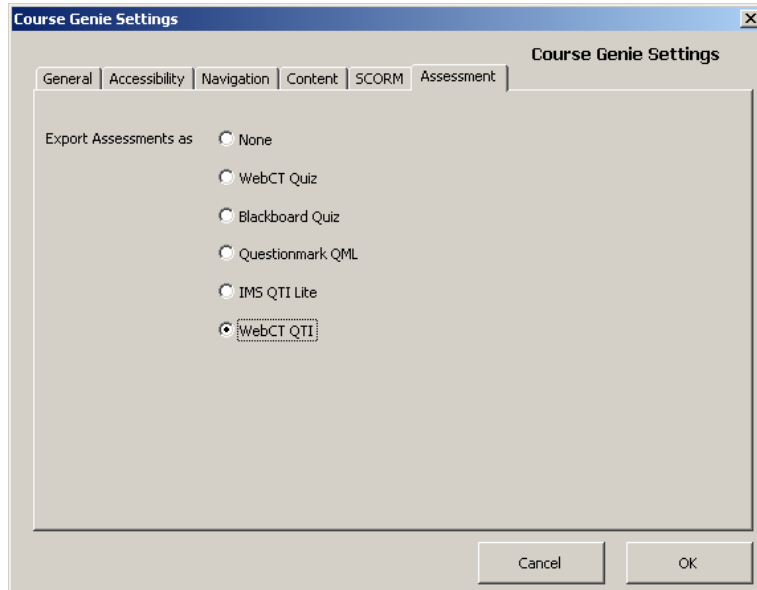
## 4. Reselecting schemes from Settings

With the changes to the locations of the schemes it may be necessary when generating an existing Course Genie document for the first time with this release to reselect the desired Scheme from the Course Genie Settings.

To do this go to the Settings option on the Course Genie menu and Word and select the desired scheme from the list of schemes on the 'General' tab.

## 5. WebCT QTI Assessment Export

Assessment export is controlled by setting the export format on the Assessment tab of the Settings dialog. There is a new assessment export option for WebCT QTI quizzes for use with WebCT Vista and Campus Edition 6.



Please see the 'WebCT QTI export' section of the Reference manual for more details.

## 6. moodle/SCORM

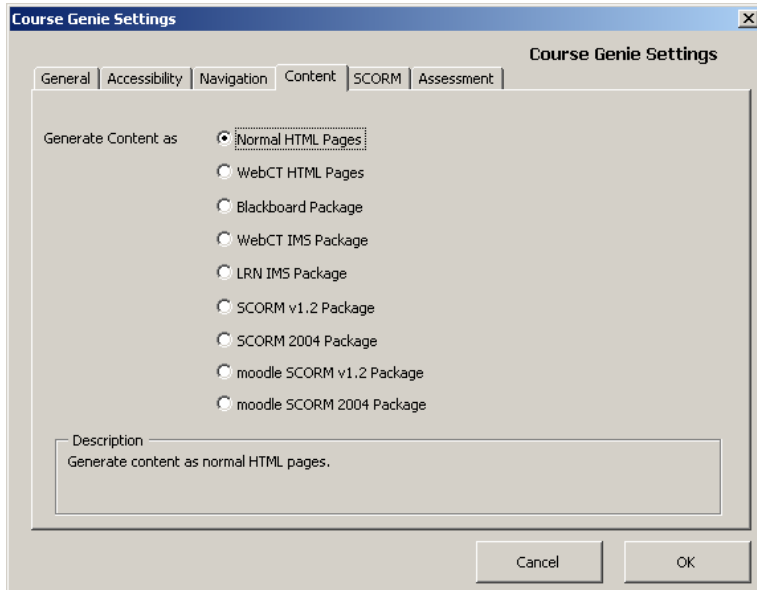
Two new Scorm options are now available. Also a new description box which contains a brief description for the content type selected has been added to the Content tab.

### moodle SCORM v1.2 package

This mode generates a SCORM v1.2 package. The package settings are appropriate for moodle v1.4 or earlier. The SCO mode is set to Single SCO, see Setting SCORM options topic in the Reference manual for further details. The resulting zip file will have a suffix of \_SCORM.

### moodle SCORM 2004 package

This mode generates a SCORM 2004 package. The package settings are appropriate for moodle v1.5 or later. The SCO mode is set to Multiple SCOs, see Setting SCORM options topic in the Reference manual for further details. The resulting zip file will have a suffix of \_SCORM2004.



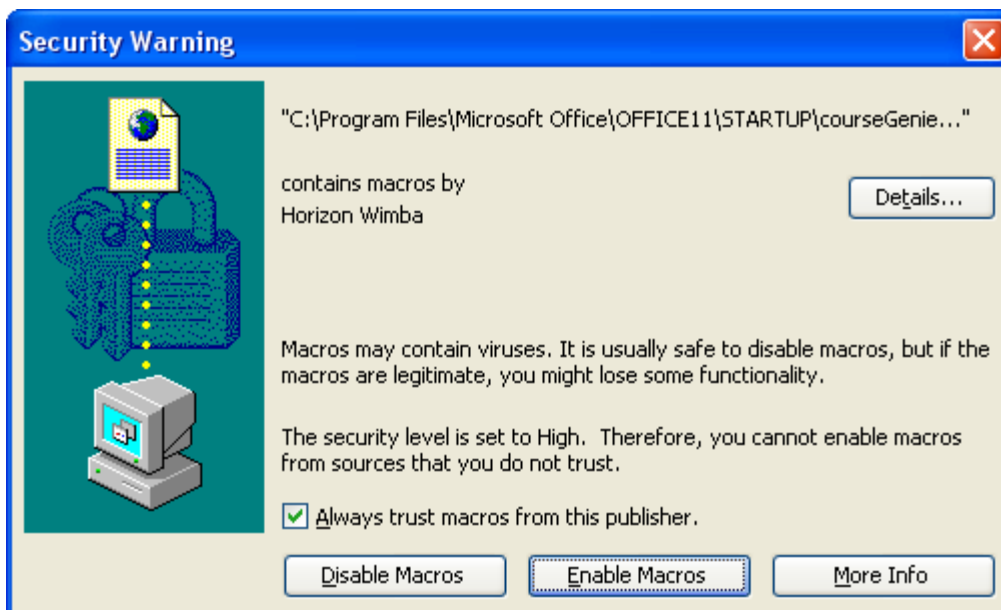
## 7. Digital Certificate

### New Digital Certificate

We have added a new digital certificate in response to feedback from customers reporting some issues with the previous certificate when installed in Windows 2000.

The digital certificate allows Course Genie to run with macro security level settings in Word set to 'High'.

When a user runs Word after Course Genie installation they will be presented with a dialog similar to the one below.



They will need to tick 'Always trust macros from this publisher' then click the 'Enable Macros' button.

The public certificate files have been included with the Course Genie installation. This should allow system administrators to deploy our certificate as a trusted publisher and prevent users from seeing the Security Warning dialog.

## 8. Adobe Acrobat Professional and Microsoft Outlook

### Adobe Acrobat Professional

With this release we have overcome the conflict with Acrobat Professional which caused the Course Genie menu to disappear or be replaced with an Acrobat menu. This applies to Acrobat Professional v7.x. Course Genie will continue to disable the Acrobat Professional v6.x macro when loaded, please see the 'Installation' manual for details.

### Microsoft Outlook

With this release we have overcome an issue where having Microsoft Outlook loaded before Word prevented Course Genie from being started.

## 9. AutoCorrect/AutoFormat

Course Genie will disable all of Word's AutoCorrect and AutoFormat features during the generation of a course, the users settings will be restored when the generation is complete. This is to prevent these features interfering with the generation process.

This mainly affects users running Course Genie in a non-English version of Word.

## 10. Windows 98/ME

With Microsoft ending support for Windows 98 we are no longer able to offer support for this platform with Course Genie.